

APPLICATION OF HIGH RESOLUTION SATELLITE IMAGERY FOR WETLANDS COVER CLASSIFICATION USING OBJECT-ORIENTED METHOD

Huan Yu ^{a,b}, Shu-Qing Zhang ^{a*}

^a Northeast Institute of Geography and Agricultural Ecology, Chinese Academy of Science, Changchun, 130012, Jilin, P. R. China- shqzhang@263.net

^b Graduate School, Chinese Academy of Sciences, Beijing 100049, P. R. China-yuhuan0622@126.com

KEY WORDS: Classification, Quickbird, Land Cover, Texture, Feature, Ecosystem, Object

ABSTRACT:

Wetlands are considered an integral part of the global ecosystem, the development of the remote sensing technology makes us obtain very abundant information of wetlands, especially with the appearance of high resolution satellite imagery which extends the visual field of the wetlands. The aim of this study is to explore the viability of applying high resolution satellite imagery for inland limnetic wetlands cover classification using object-oriented method. Thesis discussed the selection of best segmentation scale during segmentation procedure using statistical, trial and error method, determined the separability of each wetlands cover structural class using each texture band through z-test method, and a high accuracy of classification result was acquired at last through test.

1. INTRODUCTION

Convention on Wetlands of International Importance Especially as Waterfowl Habitat defined wetlands as areas of marsh, fen, peatland or water, whether natural or artificial, permanent or temporary, with water that is static or flowing, fresh, brackish or salt, including areas of marine water the depth of which at low tide does not exceed six metres. Wetlands are considered an integral part of the global ecosystem as they prevent or reduce severity of floods, feed groundwater aquifers and provide a unique habitat for flora and fauna (Mitsch & Gosselink, 1993). Lots of wetlands around the world are protected and monitored by various agencies because of their important role. But their dynamic hydrological characteristics and frequently complex terrain means wetlands are often difficult to monitor in situ. In addition, many wetlands are situated in remote locations with limited access and may cover extensive areas (Jessika & Alain, 2005). Then the use of remote sensing technology for the mapping, identification, inventory and classification of the wetlands has been a common application of satellite imagery (MacDonald, 1999; Lyon, 2001). The development of the remote sensing technology makes us obtain very abundant information of wetlands, especially with the appearance of high resolution satellite imagery which extends the visual field of the wetlands. But the challenge that faces us is how to make use of the data effectively and obtain more useful wetlands information through imagery processing.

As one of the main imagery processing technologies, the satellite imagery classification has made considerable progress, and classification using object-oriented method is being studied emphatically. Object-oriented analysis provides an alternative methodology to per-pixel based analysis (de Koket al., 1999) by developing region-growing image analysis techniques using a combination of the shape, size, texture and spectral data of the regions to classify image data (Chubey et al., 2006; Hay et al., 2005; McKeown, 1988; Johansen & Phinn, 2006a; Wulder et al., 1998). In addition, the compactness and context information with adjacent image regions can also provide important information that can be related to the classification (Blaschke and Hay, 2001; Blaschke and Strobl, 2001). And some accessorial geographic information such as elevation and soil

distribution etc. can also be added to classification. In object-oriented method, the image regions are called as objects with kinds of information that is used to classify. In this research, shape, size, texture, spectral, compactness and context information were used to classify the wetlands cover together using object-oriented method.

Lots of former studies on classification of satellite imagery using object-oriented method have been carried out. Some studies focused on applying low and middle resolution satellite imagery such as Landsat ETM, Landsat TM, NOAA AVHRR, Terra ASTER, etc. for classification using object-based method (Argialas et al., 2006; Hurd et al., 2006; Lewinski, 2006; Gitasa et al., 2004). And some studies applied high resolution satellite imagery such as Spot, Ikonos, Quickbird, Airborne imagery for classification and change detection using object-based method (Desclée et al., 2006; Mathieu et al., 2007; Stow et al., 2007; Walter, 2004; Laliberte et al., 2004; Johansen, 2007). Though application of satellite imagery for land cover classification using object-oriented method have been carried out largely, the application of high resolution satellite imagery for inland limnetic wetlands cover classification using object-oriented method is few. The aim of this study is to explore the viability of applying high resolution satellite imagery for inland limnetic wetlands cover classification using object-oriented method.

2. STUDY AREA AND DATA

Study area locates at Jingyue economical development zone, Changchun city in Jilin province, China (Figure 1). The natural scenery of study area is very beautiful, and contains lots of landscape types such as water, grass, trees, road and residential area, which is suitable for the classification test.

Test selects Quickbird satellite imagery as the data of classification because it is representative for the high resolution satellite imagery. A Quickbird imagery (Figure 1) was acquired on September 29, 2006 for the study area. The imagery is composed by four spectral bands B (Blue Band), G (Green Band), R (Red Band), NIR (Near Infrared Band) with a 2.4 m resolution and one panchromatic band with a 0.6 m resolution.

GPS points, topographic maps and vegetation maps will be together used to assess the accuracy of classification results.

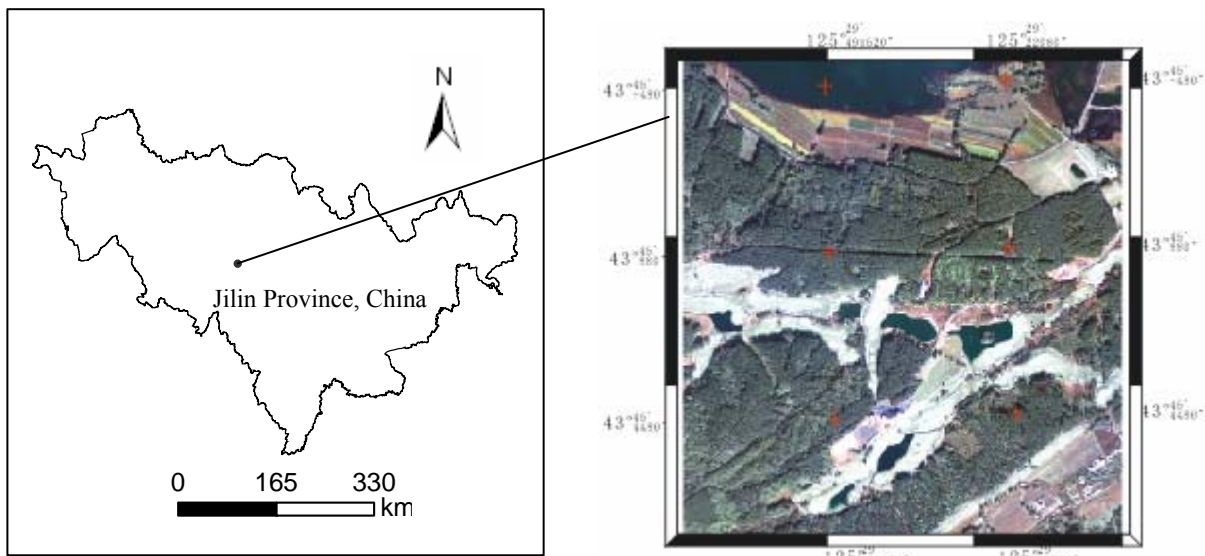


Figure 1. Location of study area and satellite imagery data

3. METHODS

Wetlands cover classification using object-oriented method needs three main steps to be finished: segmentation, classification and accuracy assessment.

3.1 Segmentation

Image segmentation is a prerequisite to classification, which is the subdivision of an image into separated regions. Those image regions resulting from segmentation represent image object primitives, serving as information carriers and building blocks for further classification or other segmentation processes (eCognition User Guide, 2002). Segmentation procedure has the objective, to provide the primitive objects, in order to apply higher level knowledge in a later step and classify the primitives into semantic objects (Argialas & Tzotsos, 2006). The purpose of the segmentation is to generate elementary imagery objects, which are primary processing units in imagery classification process.

The segmentation procedure is controlled by the user-specified scale (size) or resolution of the expected objects (Dekok et al. 1999) and the output segment sizes depend therefore on image heterogeneity and are regulated by a so-called scale factor (Baatz et al., 2001). Different segmentation scale can affect the classification result, if the features in image are large, but with a small segmentation scale, the noises in image will be not classified to according classes, then reduces the accuracy of classification; if the features in image are small, but with a large segmentation scale, some small features will be merged in the segmentation results (objects), then affect the accuracy of classification. Selection of the best segmentation scale becomes a key problem during segmentation procedure.

Some researchers have been working on the scale problem in object-oriented image analysis. Based on methods and approaches in pixel-based image analysis, Huang (2003) developed several results which focus on scaling and scale choose in object-oriented image analysis. Zhang and Maxwell

(2006) presented a fuzzy logic approach to the determination of suitable object segmentation parameters leading to an improved object-oriented classification result; A hierarchical image segmentation approach was adopted to extract the objects from multi-temporal Landsat images over Zimbabwe by Gamanya et al. (2007). Study used the objects max area method (Huang, 2003) and a trial and error procedure with eCognition software to determine the optimal scale during segmentation.

3.2 Classification and accuracy assessment

According to the test area practical conditions, seven classes forest1, forest2, grass, water, resident area, road and cultivated land became the aim of classification (figure 2). And a fusion matrix was developed to determine the classification accuracy of classification at last.

4. RESULT AND DISCUSSION

4.1 Texture band analysis

Wetlands cover classification using object-oriented method involves kinds of original input data such as spectral bands, indices deviated from spectral bands, texture characteristics calculated for some data source and some correlative geographical information. For this classification, four spectral bands B (Blue Band), G (Green Band), R (Red Band), NIR (Near Infrared Band), two vegetation indices NDVI (Normalized Difference Vegetation Index) and EVI (Enhanced Vegetation Index), one transformation PC1 (Principal Components one), one water index NDWI (Normalized Difference Water Index), and five grey-level texture cooccurrence measures were calculated for all of them: variance; homogeneity; contrast; dissimilarity and entropy. All the data were included as they were found useful for analysis of classes variability by former researchers (Johansen & Phinn, 2006b; stow, et al., 1998; Johansen, 2007; McFeeters, 1996). This study took the Z-test method that was used by Kasper Johansen, et al. (2007) to determine the separability of each

wetlands cover structural class using each texture band. To do this, all pixel values within each subset were compared using the z-test to identify the texture measure that provided the largest statistically significant difference between the wetlands cover structural classes (Johansen, 2007). Formula 1 was applied for calculating the z statistics (Zarf, 1984).

$$z = \frac{(\mu_1 - \mu_2)}{\sqrt{\frac{s_1^2}{n_1} + \frac{s_2^2}{n_2}}} \quad (1)$$

Where n_1 and n_2 : The number of samples;

μ_1 and μ_2 : Mean pixel values of two different texture bands;

s_1 and s_2 : The sample standard deviation of corresponding means.

The result of selected texture measures and their image band derivative used to optimize discrimination between classes in classification is show in table 1.

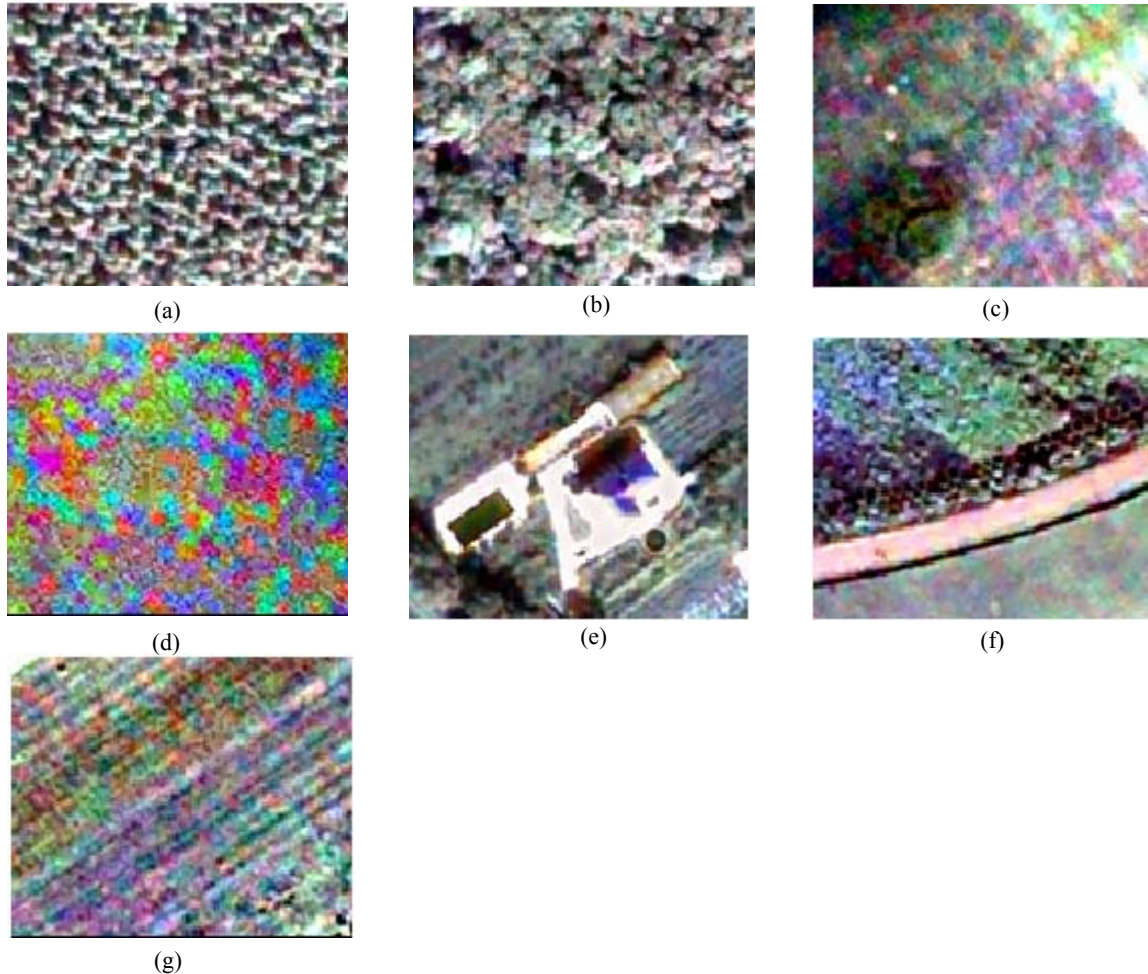


Figure 2. Classification system of study area.
(a) forest1, (b) forest2, (c) grass, (d) water, (e) resident area, (f) road, (g) cultivated land.

4.2 Selection of segmentation scale

The principle of objects max-area method is: when the segmentation scale being magnified gradually, the sizes of image objects are not point-blank increased, the sizes of some image objects keep stable within certain scale range. The graph that shows the relationship of objects max-area and segmentation scale is ladder like increased (figure 3). Each flat is the appreciate scale range for one class (Huang, 2003).

Discrimination of classes	Source bands	Texture
Forest1 - forest2	NIR	Variance
Forest1 - grass	NDWI	Homogeneity
Forest1 - resident area	Red	Variance
Forest1 - water	NIR	Homogeneity
Forest1 - cultivated land	NIR	Homogeneity
Forest1 - road	Red	Contrast
Forest2 - grass	NDWI	Entropy
Forest2 - resident area	Red	Contrast
Forest2 - water	NIR	Entropy
Forest2 - cultivated land	NIR	Entropy

Forest2 – road	Blue	Contrast
Grass – resident	Green	Contrast
Grass – water	NIR	Entropy
Grass –cultivated land	NIR	Homogeneity
Grass – road	Green	Contrast
Resident – water	NIR	Homogeneity
Resident –cultivated land	NIR	Homogeneity
Resident – road	Blue	dissimilarity
Water –cultivated land	NIR	Contrast
Water – road	Green	Contrast
Cultivated land – road	Green	Contrast

Table 1. Result of texture band analysis

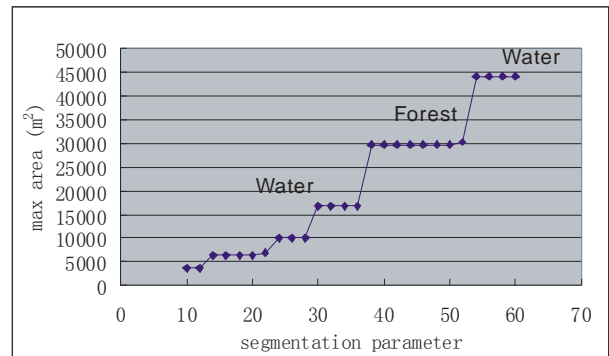


Figure 4. Relationship of scale and objects max area

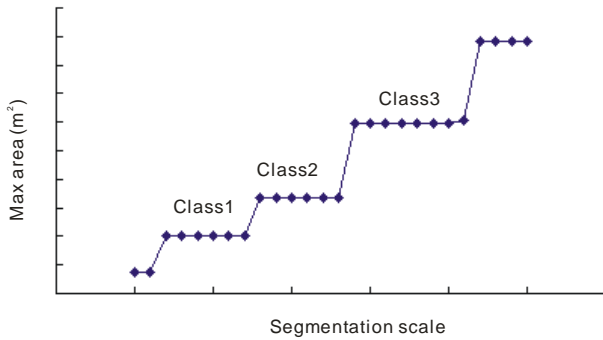


Figure 3. Sketch map of objects max area method

Took four spectral bands B (Blue Band), G (Green Band), R (Red Band) and NIR (Near Infrared Band) as the segmentation test data, through the experience of changing scale parameter with Ecognition, gained the relationship of segmentation scale and objects max area (figure 4). In figure 4, there were only two classes water and forest could be found, which meant that water and forest were the two main landscape types at test area. The graph reflected the relationship of water, forest objects max-area and segmentation scale, though other classes couldn't be found. Then scale parameter 50 was determined to carry out

segmentation for forest, and 80 was determined to carry out segmentation for water. The segmentation scales for other classes were determined through a trial and error procedure.

	Scale	Color	Shape	Compactness	Smoothness
Level 3	80	0.7	0.3	0.4	0.6
Level 2	50	0.9	0.1	0.7	0.3
Level 1	20	0.7	0.3	0.3	0.7

Table 2. Segmentation parameters system

At last, a multi-resolution segmentation parameters system (eCognition User Guide, 2002) or hierarchical network of segments (Baatz & Schaepe, 2000) was established with eCognition software, which consisted of three levels (table 2). The size of the segments decreases from level 3 (coarse) to level 1 (fine). The aim of doing this was that different segmentation scales were proper for certain classes: Level 1 was proper for segmentation for resident area and road classes. Level 2 was proper for segmentation for forest1, forest2, cultivated land and grass classes, Level 3 was proper for segmentation for water.

Type	Forest1	Forest2	Grass	Cultivated land	Water	Resident area	Road	Sum	user's accuracy
Forest1	89	1	0	0	0	0	0	90	98.9%
Forest2	4	33	0	5	0	0	0	42	78.6%
Grass	0	1	57	1	0	0	0	59	96.6%
Cultivated land	1	1	0	88	0	0	0	90	97.8%
Water	0	0	0	0	16	0	0	16	100%
Resident area	0	0	0	0	1	48	1	50	96%
Road	0	0	0	1	0	2	50	53	94.3%
Sum	94	36	57	95	17	50	51	381	
producer's accuracy	94.7%	91.6%	100%	92.6%	94.1%	96%	98%		
Total =95.25%		Kappa =0.9427							

Table 3. Accuracy assessment on classification using oriented-object in study area

4.3 Classification

“Membership Functions” and “Nearest Neighbour” classifiers were together used to carry out classify with eCognition software, water objects were distinguished by defining a membership functions that could discriminate water from other classes objects on level 1. Forest1, forest2, grass and cultivated land objects were distinguished by defining feature space that could discriminate them on level 2, which was realized through defining samples that represented different classes. Resident area and road were also distinguished by defining feature space that could discriminate them on level 3. At last, 400 sample points with attributes were selected to assess the accuracy of classification. The result was showed in table 3.

5. CONCLUSION

The study results proved the viability of applying high resolution satellite imagery for inland limnetic wetlands cover classification using object-oriented method. The total accuracy of classification reached 95.25%, which is satisfied. Through a test about the selection of best segmentation scale during segmentation procedure, study found that max area method couldn't reflect all the classification objects, a combination of statistical, trial and error method was necessary for selection of segmentation scale.

Though there are lots of original input data for classification, it is an important step to discard irrelevant and redundant features that may affect classifier performance and efficiency among those data. Study considered the separability of each wetlands cover structural class using each texture band through z-test method and gained a results that reflected selected texture measures and their image band derivative used to optimize discrimination between classes in classification. Optimal combination of bands used to segment and classify will be further discussed by work team.

ACKNOWLEDGEMENT

This research was supported by the Knowledge Innovation Program of Chinese Academy of Sciences (No. KZCX3-SW-356) and the UNDP/GEF: Wetland Biodiversity Conservation and Sustainable Use in China (No. CPR/98/G32). We also thanks Changchun Institute of Surveying & Mapping for providing the Quick bird satellite imagery for test.

REFERENCES

- A. Blum, P. Langley.,1997. Selection of relevant features and examples in machine learning, *Artif. Intell.* 97 (1–2), pp. 245–271.
- A. Jain, D. Zongker.,1997, Feature selection: evaluation, application, and small sample performance, *IEEE Trans. Pattern Anal. Mach. Intell.* 19 (2), pp. 153–158.
- Argialas, D., Tzotsos, A.,2006. Automatic extraction of physiographic features and alluvial fans in nevada, USA, from digital elevation models and satellite imagery through multiresolution segmentation and object-oriented classification. *ASPRS Annual Conference*, Reno, Nevada, May 1-5.
- Atkinson, P. M.,1993. The effect of spatial resolution on the experimental variogram of airborne MSS imagery. *International Journal of Remote Sensing*, 14, pp. 1005–1011.
- Atkinson, P. M., Dunn, R., & Harrison, A. R.,1996. Measurement error in reflectance data and its implications for regularizing the variogram. *International Journal of Remote Sensing*, 17, pp. 3735–3750.
- Baatz, M., A. Schaeppe,2000. Multiresolution segmentation – an optimization approach for high quality multiscale image segmentation. In: Strobl, J., T. Blaschke & T. Griesebener (Eds.) *Angewandte Geographische Information sverar- beitung (AGIT-Symposium Salzburg)*, pp. 12-23.
- Baatz, M., Benz, U., Dehghani, S., Heynen, M., et al.,2001. *eCognition, Object Oriented Image Analysis. User Guide*. Definiens Imaging, Munich.
- B. Deronde, P. Kempeneers , R.M. Forster.,2006. Imaging spectroscopy as a tool to study sediment characteristics on a tidal sandbank in the Westerschelde. *Estuarine, Coastal and Shelf Science* 69, pp. 580–590.
- Blaschke, T., & Hay, G. J.,2001. Object oriented image analysis and scalespace: Theory and methods for modeling and evaluating multiscale landscape structure. *International Archives of Photogrammetry and Remote Sensing*, 34(4), pp. 22– 29.
- Blaschke, T., & Strobl, J.,2001. What's wrong with pixels? Some recent developments interfacing remote sensing and GIS. *GeoBIT/GIS*, 6, pp. 12– 17.
- Chubey, M. S., Franklin, S. E., & Wulder, M. A.,2006. Object-oriented analysis of Ikonos-2 imagery for extraction of forest inventory parameters. *Photogrammetric Engineering and Remote Sensing*, 72, pp. 383–394.
- de Kok R., Schneider T., & Ammer U.,1999. Object-oriented classification and applications in the alpine forest environment. *International Archives of Photogrammetry and Remote Sensing*, 32, Part 7-4-3 W6, 3–4 June 1999, Valladolid, Spain.
- Dekok, R., Schneider, T., Ammer, U.,1999. Object based classification, applications in the alpine forest environment. *International Archives of Photogrammetry and Remote Sensing*, 32, pp. 3–4.
- Desclée B., Bogaert P., Defourny P.,2006. Forest change detection by statistical object-based method. *Remote Sensing of Environment* 102, pp. 1–11.
- eCognition User Guide,2002. <http://www.definiensimaging.com>
- Gamanya, R. et al.,2007. Object-oriented change detection for the city of Harare, Zimbabwe, *Expert Systems with Applications*, doi:10.1016/j.eswa.2007.09.067
- Gitasa I. Z., Mitrib G. H., Venturac G.,2004. Object-based image classification for burned area mapping of Creus Cape, Spain, using NOAA-AVHRR imagery. *Remote Sensing of Environment*, 92, pp. 409–413.
- H. P. Huang. Scale issues in object-oriented Image Analysis[D]. *Institute of Remote Sensing Applications, Chinese Academy of Sciences, Beijing:June2003.*

- Hay, G. J., Castilla, G., Wulder, M., & Ruiz, J. R., 2005. An automated object oriented approach for the multiscale image segmentation of forest scenes. *International Journal of Applied Earth Observation and Geoinformation*, 7, pp. 339–359.
- Hurd J. D., Civco D. L., Gilmore M. S. et al., 2006. Tidal wetlands classification from landsat imagery using an integrated pixel-based and object-based classification approach. *ASPRS Annual Conference, Reno, Nevada, May 1-5*.
- Jessika To"yra", Alain Pietroniro, 2005. Towards operational monitoring of a northern wetlands using geomatics-based techniques. *Remote Sensing of Environment*, 97, pp. 174 – 191.
- Johansen, K. et al., 2007. Application of high spatial resolution satellite imagery for riparian and forest ecosystem classification. *Remote Sensing of Environment*, doi:10. 1016/j.rse. 2007.02.014
- Johansen, K., & Phinn, S., 2006a. Linking riparian vegetation spatial structure in Australian tropical savannas to ecosystem health indicators: Semivariogram analysis of high spatial resolution satellite imagery. *Canadian Journal of Remote Sensing*, 32, pp. 228–243.
- Johansen, K., & Phinn, S., 2006b. Mapping structural parameters and species composition of riparian Vegetation using IKONOS and Landsat ETM+ data in Australian tropical Savannas. *Photogrammetric Engineering and Remote Sensing*, 72, pp. 71–80.
- Kalayeh, H.M., Muasher, M.J., Landgrebe, D.A., 1983. Feature selection with limited training samples. *IEEE Transactions on Geoscience and Remote Sensing GE-21 4*, pp. 434–438.
- Laliberte A. S., Rangoa A., Havstada K. M. et al., 2004. Object-oriented image analysis for mapping shrub encroachment from 1937 to 2003 in southern New Mexico. *Remote Sensing of Environment*, 93, pp. 198– 210.
- Landgrebe, D.A., 2003. *Signal Theory Methods in Multi-spectral Remote Sensing*. Wiley-Interscience, Hoboken, NJ, pp. 508.
- Lyon J G. , 2001. *Wetlands Landscape Characterization: GIS, Remote Sensing, and Image Analysis*. Chelsea, MI: Ann Arbor Press.
- Macdonaid T A., 1999. *Wetlands rehabilitation and remote sensing[C] //Streever E. An International Perspective on Wetlands Rehabilitation*. Boston, Netherlands: Kluwer Cademic Publishers. pp. 251 – 264.
- Mathieu R., Freeman C., Aryal J., 2007. Mapping private gardens in urban areas using object-oriented techniques and very high-resolution satellite imagery. *Landscape and Urban Planning* 81, pp. 179–192.
- McFeeters S K., 1996. The Use of Normalized Difference Water Index (NDWI) in the Delineation of Open Water Features. *International Journal of Remote Sensing*, 17(7), pp. 1425–1432.
- McKeown, D., 1988. Building knowledge-based systems for detecting manmade structures from remotely sensed imagery. *Philosophical Transactions of the Royal Society of London, Series A: Mathematical and Physical Sciences*, 324(1579), pp. 423–435.
- Mitsch, W. J., & Gosselink, J. G. , 1993. *Wetlands*. New York: John Wiley & Sons, pp. 722.
- Stanislaw Lewinski., 2006. Applying fused multispectral and panchromatic data of Landsat ETM+ to object oriented classification. *Proceedings of the 26th EARSeL Symposium, New Developments and Challenges in Remote Sensing, May 29-June 2, Warsaw, Poland*.
- Stow, D. et al., 2007. Monitoring shrubland habitat changes through object-based change identification with airborne multispectral imagery. *Remote Sensing of Environment*, doi:10.1016/ j.rse.2007.07.011.
- Stow, D., Hope, A., Boynton, W., Phinn, S., Walker, D., & Auerback, N., 1998. Satellite-derived vegetation index and cover type maps for estimating carbon dioxide flux for arctic tundra regions. *Geomorphology*, 21, pp. 313–327.
- Walter V., 2004. Object-based classification of remote sensing data for change detection. *ISPRS Journal of Photogrammetry & Remote Sensing* 58, pp. 225– 238.
- Wulder, M. A., LeDrew, E. L., Franklin, S. E., & Lavigne, M. B., 1998. Aerial image texture information in the estimation of northern deciduous and mixed wood forest leaf area index (LAI). *Remote Sensing of Environment*, 64, pp. 64–76.
- Zar, J. H., 1984. *Biostatistical analysis (2nd ed.)*. Englewood Cliffs: Prentice-Hall.
- Zhang Y. , Maxwell T., 2006. A fuzzy logic approach to supervised segmentation for object-oriented classification. *ASPRS Annual Conference, Reno, Nevada, May 1-5, 2006*.